



21 Moorfields Newsletter

August 2019

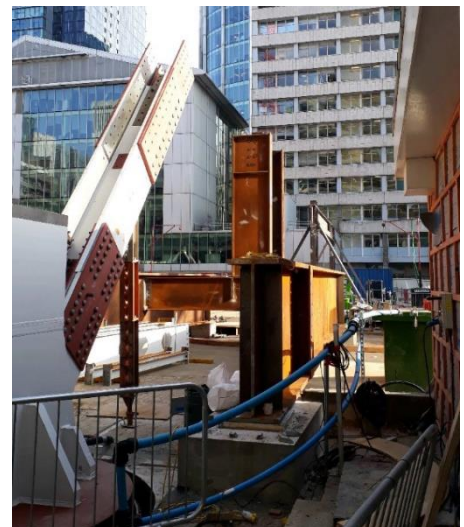
Dear Neighbour,

Welcome to your latest newsletter on the 21 Moorfields development. Over the past month works have included:

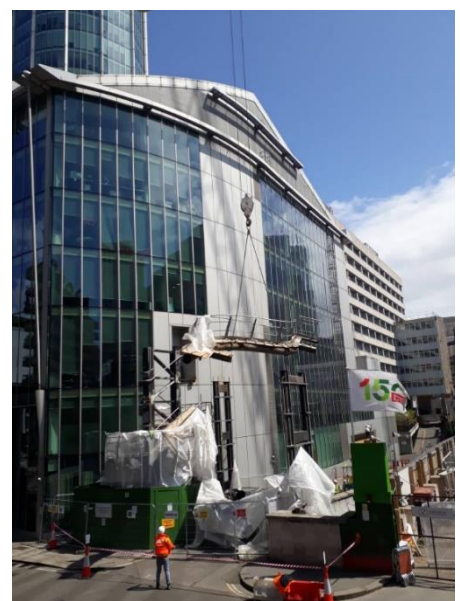
- Continuation of enabling works
- Erection of Tower Crane 1 towards the west of the site
- Progression of steelwork up to level 1
- Temporary waterproofing of the retained deck
- Commencement of metal decking to level 1
- Continuation of works to remove the final section of the Moorfields Highwalk
- Works to put a pedestrian gantry in place adjacent to Moor Place have been completed

Upcoming Works

- **Moorfields Highwalk:** The final section of the Moorfields Highwalk has now been removed. The removal of the bridge foundations using breakers is ongoing. This will lead to an increase in noise, but is being closely monitored. Acoustic protection is in place, and City of London reduced impact hours are being adhered to. These works are due to be complete very shortly.
- **Tower Crane Works:** There are some alterations due to be made to TC2 in order to increase the height of the crane. Due to the exclusion zones needed for safety reasons, these works will take place over the weekend. These works are now scheduled to take place over the weekend of the 7th / 8th September.
- **Welfare Relocation:** Our current welfare will be removed during the last week of August. This will involve vehicles collecting the welfare cabins out of hours. Exact details of this will be released in due course.



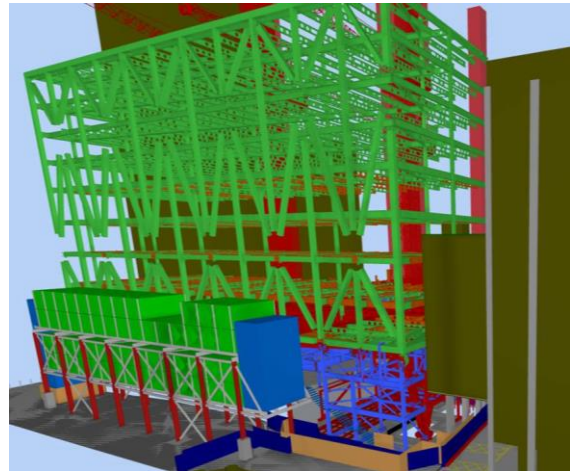
Steelwork progression



Removal of Highwalk

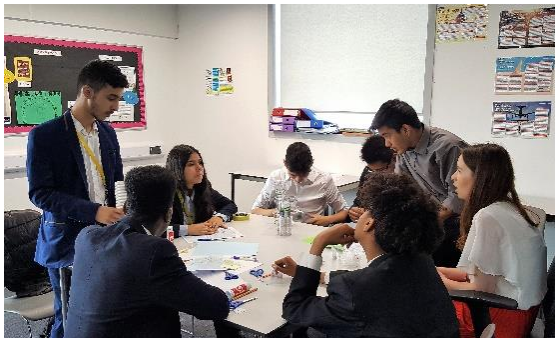
Steelwork Progression

- Erection of the temporary steelwork on top of the Crossrail box continues
- The main steelwork erection continued, working from the East to the West (Moorfields towards Moor Lane)
- The steelwork will be put in place to form a 'tripod' on the North East corner of the site. This is where the building will effectively 'hang' over the entrance to Moorgate station in the finished design. You can see this in the images to the right – the permanent steel is in green and the temporary steel is in blue



Community Investment

Over the month of July, we have participated in three school workshops, engaging with 116 young people.



Valuing the Workforce

On the hottest day of the year so far, we brought an ice cream van onto site to thank our workforce for their hard work to date!



Air Pollution Innovations

You can find out more about how we are combating air pollution in your area by reading the 21 Moorfields case study on our company website:

<https://www.srm.com/news-and-comment/innovative-solutions-to-reduce-air-pollution-around-moorgate/>

Contact Us

For more information please contact our Community Manager, Laura Regan: laura.regan@srm.com (Mon – Fri) or visit our project website: 21-moorfields.com

24 hour hotline number: 0800 061 2131

Like to join our WhatsApp group? E-mail us to sign up